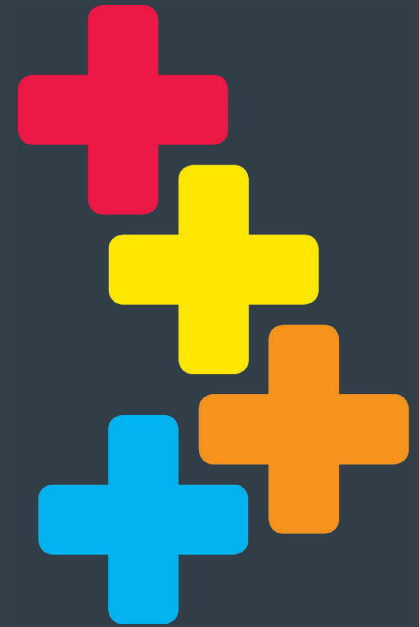


For Parents MindPlus Y2-8 Students Information Pack

Empowering Extraordinary Minds



New Zealand Centre
for Gifted Education
Empowering Extraordinary Minds

hello@nzcge.co.nz
0800 769 243

MindPlus programmes for 6-13 year olds

The New Zealand Centre for Gifted Education is a non-profit organisation that operates the MindPlus family of programmes across New Zealand, both face to face and online.

What is MindPlus?

MindPlus is a one session a week programme with a specialist teacher that runs during school time, or sometimes at home.

Students aged 6-13 have three options for accessing the programme:

- **MindPlus OurSchool:** *Where like-minds come together* - The original in-person day-long experience at one of our 14 units around New Zealand
- **MindPlus YourSchool:** *Enrichment brought to your place* - Working with other gifted learners at your own school/kura, with our specialist teacher available via Zoom and Google Classroom
- **MindPlus Online:** *A space where you can connect from anywhere* - Working from home or your school, interacting with other learners and our teacher via Zoom and Google Classroom

For gifted learners who need a few hours per week of strengths-based extension (as part of the above, or on its own) we also offer **MindPlus Badges**.

Our specialist teachers understand neurodiverse learners and what makes them tick - and small class numbers, online and face to face, enable personalised

learning that focuses on each child's strengths and interests. Students gain the most benefit when they participate for two or more years, building lasting relationships with the teacher and like-minded peers.

What's the thinking behind the one session a week model?

We designed MindPlus to meet specific learning, social and emotional needs of intellectually and creatively gifted learners. It is not intended to meet all of their needs. There are a range of needs that are best met at their regular school, at home and within the community.

One session per week at MindPlus is sufficient to provide cognitive challenge, increased creative productivity, interpersonal development, and sustained talent development, all of which can be taken back into regular school interactions.

This information pack covers:

- Our MindPlus programmes
- What we teach - our NZCGE curriculum
- How to apply to join a MindPlus programme
- Fees and scholarships available.

If you would like to attend an information session, or have any questions, email us at hello@nzcge.co.nz or phone 0800 769 243

What would one session a week at MindPlus be like for me?

Every session at MindPlus is unique, because every group of students is unique. A session might include:

- Coming up with a new invention or design
- In-depth philosophical discussions where you get to share your thinking and ideas
- Understanding what giftedness means, for you and for other kids like you, and how to develop your own strengths
- Working out how to explain your giftedness, and the joys and challenges that it brings, to your friends, teachers and whānau
- Creative thinking games, where you can let your imagination go wild!
- Individualised activities that you design with your specialist teacher that will help you to work on your personal interests and talents, like fantasy writing, game design, coding, chess, 3D construction, art, design, learning another language ...





MindPlus OurSchool

Come together with other Y2 - 8 gifted learners in small classes for one day per week during school hours at one of our 14 physical locations around NZ.

Does my child's school have to give permission for them to attend MindPlus?

Yes, they are considered legally still to be at school, so the school's permission is required for them to leave school or their class and attend the programme.

It's also optimal for your child's school - we call them the Contributing School - to be fully on board. We work with your child's classroom teacher to share how your child is doing with us, and we can support them to extend and manage your child more effectively at school.

Many of our Contributing Schools send a number of students to us and can contribute to their fees as discussed further below.

Some children have learning challenges as well as learning gifts. How do you manage that in the classroom?

Giftedness can co-exist with a range of other challenges. Our specialist educators are able to recognise and understand many of these challenges and shape the learning programme so that these are 'worked around' in the MindPlus day. Examples of this might include - giving a range of options to respond to learning activities rather than just writing; facilitating movement as needed; having designated spaces for individual work as needed and use of assistive technologies as needed. We are a strengths-based programme, so we work with students to make the best use of their strengths.

It's also really important that the kids complement each other and are able to learn well as a group. To work out the best fit for each student, our entry process gathers information from home and school and students participate in a three hour workshop.

We watch how the students interact, and find out more about their intellectual, creative, social and cultural ways of working.

We are working to achieve a balance of gender, ethnicity and types of neurodiversity across all our classes. It is worth noting that, historically, schools (and sometimes parents) have been less quick to spot giftedness in girls and children from non-majority cultures.

Where are MindPlus OurSchool units located?

MindPlus OurSchool currently operates out of 14 units (classrooms) across New Zealand:

- Auckland - North (Verran Primary School, Birkdale), West (Bruce McLaren Intermediate, Henderson), Central (Edendale Primary School, Sandringham), East (Riverina Primary School, Pakuranga)
- Tauranga (Gate Pa School)
- Rotorua (Kaitao Intermediate School)
- Manawatu (WhatBox?)
- Lower Hutt (Rata Street School)
- Wellington - West (Cardinal McKeefry School, Wilton), South (Evans Bay Intermediate, Kilbirnie)
- Lincoln (Lincoln Primary School)
- Christchurch (Riccarton High School)
- Mid-Canterbury (Ashburton Christian School)
- Wakatipu (KingsView School)

We are looking to open a new unit in Auckland (South) and Hamilton, subject to finding available space. Please let us know if these locations would suit you. New units are able to be opened where there is a sufficient core of students and Contributing Schools - talk to us about how to build this in your area!

If you do not live near one of these units, and your school is not able to offer MindPlus YourSchool, then you may wish to consider MindPlus Online.



MindPlusYourSchool

Work with other Y2-8 gifted learners at your own school/kura, with your own teacher plus our specialist MindPlus teacher via Zoom and Google Classroom.

Who is MindPlus YourSchool for?

MindPlus YourSchool is designed for gifted kids and schools in the following situations:

- Students don't have a MindPlus OurSchool unit accessible to them
- Students feel comfortable at their existing schools and would prefer to get the support they need there
- Students want to learn alongside their peers rather than wholly online
- Schools want to provide effectively for gifted kids at their own school but do not have teaching staff with this specialisation.

How does MindPlus YourSchool work?

For students, MindPlus YourSchool happens once a week when a group of gifted kids from the school comes together for half a day with a teacher from the school ("the Partner Teacher"). During each session, the students and their Partner Teacher meet online with their MindPlus Teacher and then work through the same MindPlus curricular activities as students in a MindPlus OurSchool unit, with guidance, feedback and support from their Partner Teacher and online MindPlus Teacher. The extra benefit for the students is that their Partner Teacher becomes a champion for them and can help other teachers at the school to more effectively meet their needs.

Can my school be a part of MindPlus YourSchool?

MindPlus YourSchool is a new addition to the MindPlus family and will be piloted with around 10 schools in 2022. If you would like your school to be a MindPlus Partner School, do ask them to get in touch with us.



MindPlus Online

Work independently from home or your school, interacting with other learners and our specialist MindPlus teacher via Zoom and Google Classroom.

How does MindPlus Online work?

MindPlus Online connects gifted children with like-minded peers, providing them with an online learning and social support network. Work is introduced and supervised by a specialist teacher who knows how to get the best from an online learning environment and understands what makes gifted learners tick. MindPlus Online students can negotiate their own learning pathway, catering for individual strengths and interests and ensuring that they are appropriately stretched.

A MindPlus Online session include:

- A 45-minute Zoom session with a small class of like-minded peers and a specialist educator (this can be before or after school or during the school day)
- 2 hours (minimum) of MindPlus activities to complete using Google Classroom
- Freedom to share and interact with virtual classmates on Google Classroom.

What kind of students does MindPlus Online suit?

MindPlus Online works for gifted kids across many different situations. Some of our Online students do MindPlus Online at home as an extra activity, without the involvement of their regular school. Some of our kids are home-schooled and do MindPlus Online as part of their schoolwork. Other kids do MindPlus Online at school with the support of the school. Some of our MindPlus kids live outside NZ and really value the specialist support NZCGE provides as they can't find this where they are.



MindPlus Badges

Explore your own talent area for a few hours a week, supported by your MindPlus teacher and other gifted learners, carried out as part of one of our other MindPlus programmes or on its own.

What are MindPlus badges?

MindPlus Badges offer extension challenges in specific strength areas. Students work independently in Google Classroom, with a specialist teacher as needed across the term.

We currently offer six MindPlus Badges:

- **History Badge:** For those passionate about the past, ancient civilisations, development of technology over time, or myths and legends
- **Science Badge:** For those passionate about finding out why and how things happen or work, making chemical reactions, and who enjoy being a 'myth buster'
- **Maths Badge:** For those passionate about all things mathematical, covering logical and creative thinking, puzzle and problem solving - from maths, the real world and our imaginations
- **Design Badge:** For those passionate about designing, building, making and creating, involving activities around design theory, graphics, coding, animation, gaming, modelling, presentation, colour theory, invention and innovation
- **Writing Badge:** For those passionate about writing and story-telling, in any form
- **Creative Thinking Badge:** For those passionate about thinking outside of the box and who enjoy curly challenges and complex solutions.

Coming soon: **Movie Badge, Readers Badge, Animation Badge**

NOTE:

Badges can be achieved at three levels: bronze (achieved), silver (merit) and gold (excellence).

Who can do MindPlus Badges?

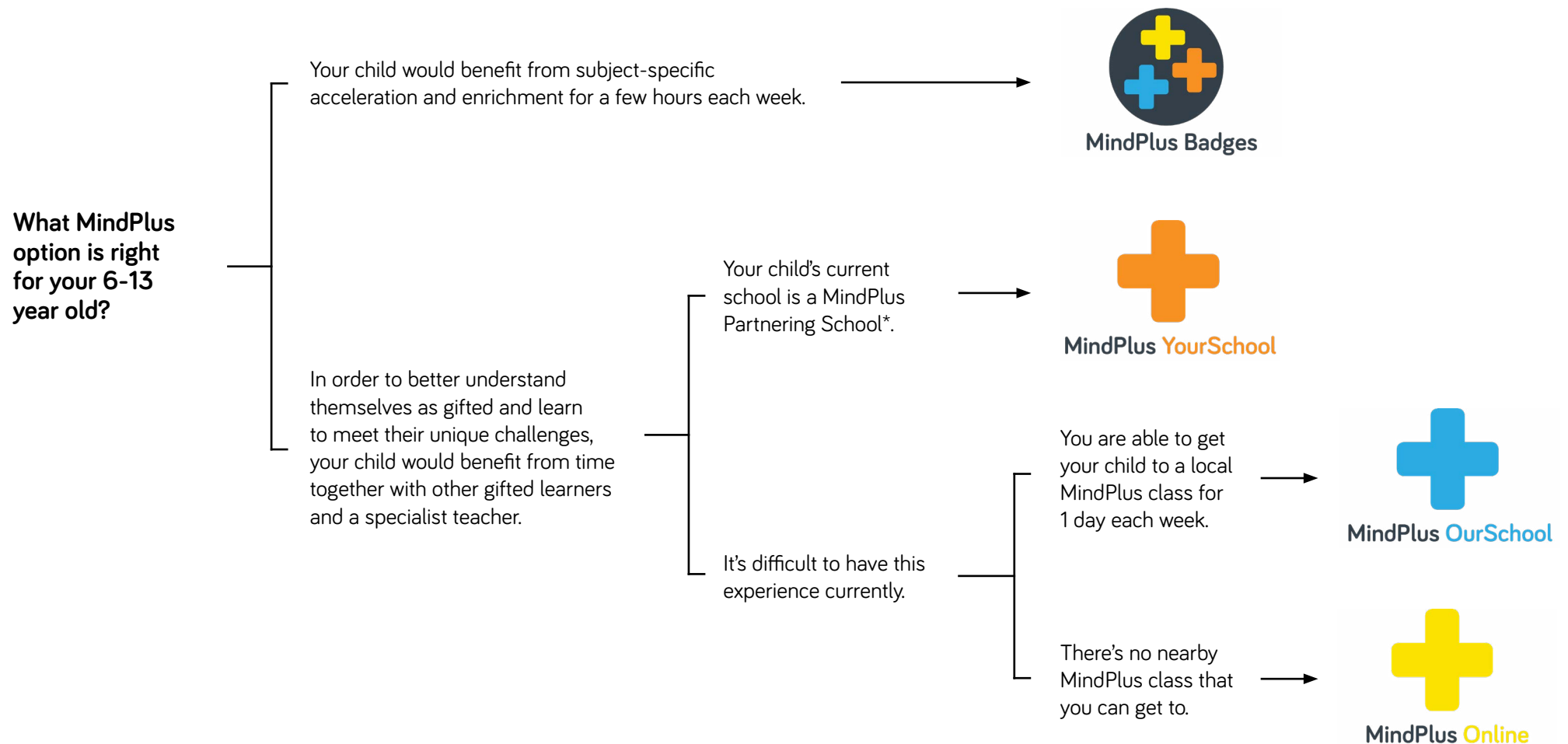
MindPlus Badges are for students in Year 4 and over. Students require relatively strong reading, comprehension and technological skills, and need to be able to access Google Classroom and Zoom with some independence. Younger children may be able to negotiate a place in the MindPlus Badge programme.

Students do not need to be enrolled in any of the other MindPlus programmes to undertake a badge.

Undertaking each badge requires a minimum of 30 minutes per week, up to a maximum of two hours each week. MindPlus Badges are entirely self-paced and there is no time limit for completing each badge. On average, completion of a MindPlus Badge takes one school term.



Which MindPlus option is right for my 6-13 year old child?



* Programme to be piloted in 2022

What we teach at MindPlus

The learning experiences we provide at MindPlus are built on our own New Zealand Centre for Gifted Education Curriculum. This is a purpose-built specialist curriculum for gifted learners, developed with national and international experts and research. It underpins all MindPlus programmes and complements the New Zealand

Students interact with learners of like-minds to:



Develop an understanding of self and others as gifted individuals.



Explore and develop strengths, talents, interests and passions.



Develop and engage in abstract learning.



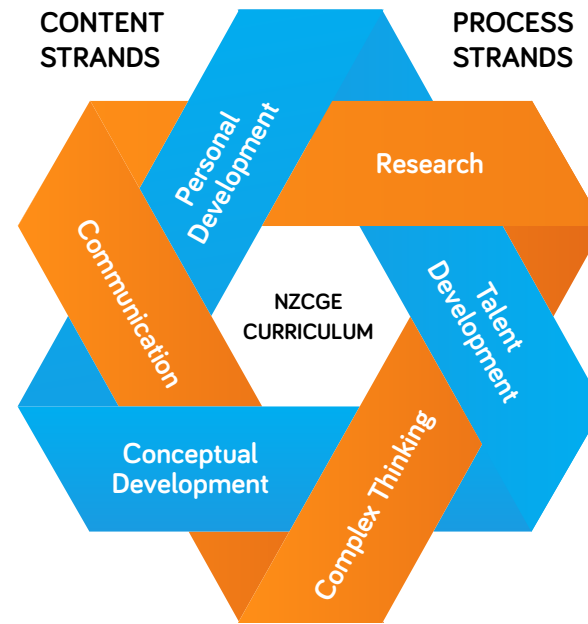
Build self-direction and autonomy in learning.



Develop and use sophisticated learning processes.

Like Minds

The NZCGE Curriculum is built on the premise that effective learning for gifted students involves bringing students of like minds together. This is strongly identified as critical in the research literature.



The NZCGE Curriculum involves advanced content and learning processes. These strands are connected and provide abstraction, depth and complexity in learning that builds over time.

Content Strands

- **Personal Development**
Personal development is about understanding one's own gifted identity - the joys and challenges of being gifted along with the skills and strategies to navigate personal and social development.

- **Conceptual Development**
Conceptual development is about thinking and learning through ideas and concepts. It introduces advanced and abstract content and equips students with skills in dealing with big ideas and questions.
- **Talent Development**
Talent development is specifically designed to identify and build students' strengths, passions and interests, moving them deliberately towards expertise.

Process strands

Our curriculum also supports students to develop the 'how to' skills needed for in-depth and complex learning. These skills are taught explicitly and also woven through the content strands. The main process skills developed through the curriculum are **Research, Complex Thinking** and **Communication Skills**.

How to apply

*Note that this section covers only **MindPlus OurSchool**, **MindPlus Online** and **MindPlus Badges**. The application process for **MindPlus YourSchool** will be managed by Partner Schools directly.*

How do I submit an application?

Our application process is designed to gather a wide range of information about each child from home and school - their intellectual, creative, social, personal and cultural abilities and qualities. We are looking for a fit between the child's abilities and potential and what we offer in MindPlus programmes.

The MindPlus Application pack covers the OurSchool, Online and Badges programmes and consists of:

- 1. Principal Form** (not required for homeschooled students or for Badges)
- 2. Teacher Form** (not required for homeschooled students or for Badges)
- 3. Parent and Whānau Form** (including any additional (but not necessary) information such as a psychologist's report).

You will need to fill out the Parent and Whānau Form and provide the Principal and Teacher Forms to your school and ensure that they return them to us.

If you would like to receive an Application Pack, email us at hello@nzcge.co.nz or phone 0800 769 243.

What is the Entry Workshop?

The Entry Workshop is required only for MindPlus OurSchool students. Invitations to attend a workshop will be sent out once we have received your completed Application Pack.

Please note that we cannot reserve a space in a workshop for your child if we haven't received the fully completed Application Pack before the cut-off date for that workshop. It's important to work with your school as early as possible to ensure they have time to fill in the forms required.

At the three hour workshop, held during the school day, small groups of children work on a range of stimulating and challenging activities. The workshop allows our specialist teachers to look for students' intellectual, creative, social, personal and cultural abilities and qualities. There is usually one workshop at each unit in Terms 1 and 2 and then a workshop for the following year's places in Term 4.

At times, if there are exceptional circumstances, a modified version of the entry process to MindPlus OurSchool may be completed by the Entry Selection Team, with those selected being offered a trial placement.

How will I find out if my child has been accepted?

After the application process has been completed, our Entry Selection Team will consider all the information provided to see if the selected MindPlus programme will be a good fit for your child. If it is unsure, as does happen in some cases, we may offer your child a trial placement to see if MindPlus works for them.

At this point, we will see when an opening can be found in the programme you have applied for. Please recognise that a space may not be available immediately given that many of our programmes are at full capacity and, depending on demand levels, we may need to work to open another class or group.

Once we have ascertained that your child is suitable for the MindPlus programme for which they have applied and that a place is available, we will make you a **Place Offer** by email, providing all the details you will need on how to participate, and enclosing a **MindPlus Guide** for the specific programme your child is commencing.

If we consider that your child is suitable for the programme but we do not immediately have a place available, we will notify you that this is the case and ask if you would like your child to go onto a waiting list.

How will you liaise with my child's school?

Once you have accepted your Place Offer, we will write to your child's principal to confirm that your child will be participating in the programme and sending them a **Contributing Schools Information Pack** which outlines how we hope to work together with them to support your child, including by sharing the termly reports we provide to you, and being available to discuss any issues as and when needed. We will also provide your child's school with contact details for their MindPlus teacher.

Home-schooled students

If your child is homeschooled, we will adapt these processes to work with you directly.

Fees and support

How much does it cost to participate in MindPlus?

The weekly and annual fees for our MindPlus programmes are set out below.

Programme type	Weekly cost (incl GST)*	Annual cost (incl GST)*
MindPlus OurSchool	\$75	\$2,850
MindPlus YourSchool	\$35	\$1,330
MindPlus Online	\$35	\$1,330
MindPlus Badges	Cost per badge - \$150	

* the per week cost is for 38 weeks

Fees are billed in advance each term, and families are able to pay in full, weekly, fortnightly or monthly.

We know that these fees are significant for many families and we suggest that families work with their schools to support them to attend. If that support is unavailable and the family is otherwise unable to afford for their child to attend MindPlus, we do have a Scholarship Fund which is available to assist a small number of students each year who meet its criteria.

We ask families who can afford it to consider “buy one, give one” - providing a scholarship for a child who would otherwise not be able to attend MindPlus to join the programme alongside your child.

How to work with your school to support

As a first port of call, once you have a **Place Offer**, we suggest that you talk to the principal at your child's school about how they can support your gifted child to participate in MindPlus.

Under the Government's National Administration Guidelines, all schools have a responsibility to identify and provide for gifted learners (NAG 1(c)(iii)). You may want to ask your school what they do to provide for gifted learners and whether they would consider supporting your child to participate in MindPlus as part of this commitment.

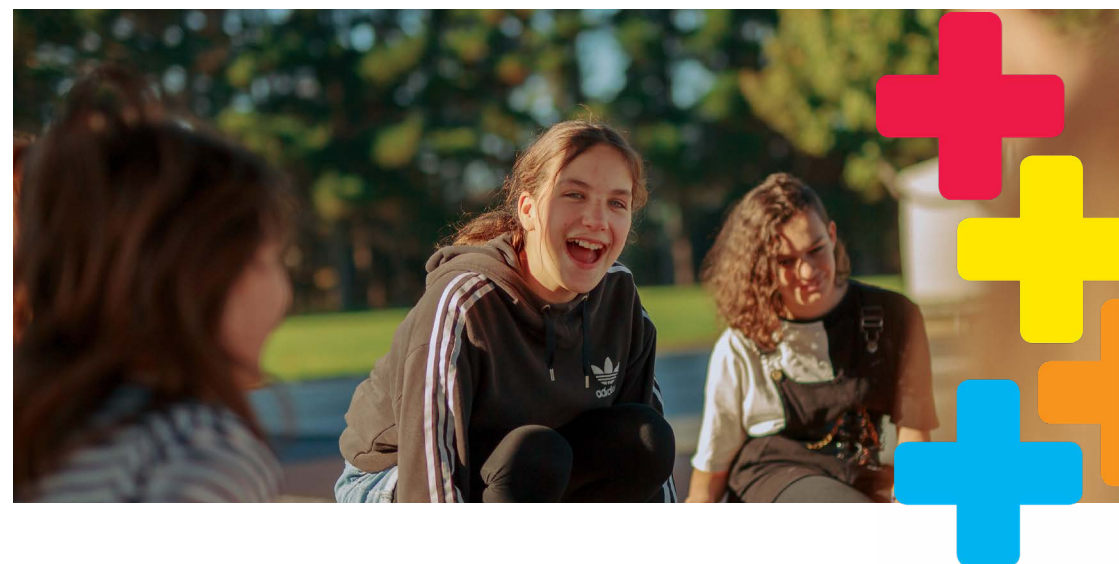
Schools have a number of ways to support gifted kids by working or partnering with NZCGE:

- Allowing their students to attend **MindPlus OurSchool** for one day per week, and potentially subsidising their fees or providing scholarships for them to attend, as a number of our Contributing Schools do
- Becoming a MindPlus Partner School and offering **MindPlus YourSchool** to a group of gifted kids working with a teacher from the school and a MindPlus teacher online
- Supporting individual students to participate in **MindPlus Online** or **MindPlus Badges** whilst at school and potentially subsidising their fees.

We are available to talk with your child's school about how these options could work for them.

How to find other community sources of support

If your school is unable to provide financial support themselves, they may still be able to help you identify other potential sources of support in your community. Schools may know of or already be working with local trusts, businesses, churches, iwi organisations, Lions and Rotary Clubs and other service organisations who may support families in your situation.





Scholarships

How to apply for a full or part scholarship

If you have not been able to find support through your school or in your local community and you meet our criteria, you can apply for a full or part scholarship from our Scholarship Fund. With a full scholarship, families pay \$10 a week (or \$380 each year) and with a part scholarship, \$35 a week (or \$1,330 each year).

Our main Scholarship Fund has a strategic focus on increasing the number of kids who are right now significantly under-represented in our programmes: girls, Māori and Pasifika students, and students from low decile schools.

Criteria

To be eligible for our main Scholarship Fund, you and your child must meet at least one of the following criteria:

- Your child is female
- Your child identifies as Māori and/ or Pasifika
- Your child attends a Decile 1-4 school

You **also** need to show us that:

- Without the full or part scholarship, your family could not afford for your child to participate in MindPlus. You'll need to provide a statement that outlines your family's financial position, and you are able to attach information, such as a family budget, to support your statement
- You have made a significant effort to find other sources of financial assistance for your child, including by working with their school. You'll need to provide a statement that outlines the steps you have taken.

Note that we do have a limited discretionary fund available for students and families who do not otherwise meet these criteria but where there are extraordinary circumstances.

Scholarship Application Form

Along with your Place Offer, we will send a Scholarship Application Form for you to fill out and send to us if you financial support.

Once we have received your Scholarship Application Form, we will assess whether:

- You meet our criteria and
- We have a scholarship currently available that fits your child's needs.

We will let you know the outcome as soon as possible.

Please note that we are currently working to build the number of scholarships available in our Scholarship Fund. We may not immediately have funding available but can put you on a waiting list for a scholarship.

Do you still have a financial subsidies scheme?

We currently operate a financial subsidies scheme which will finish at the end of 2021. Existing students supported under the financial subsidies scheme will continue to be supported on this basis for as long as they want to stay at MindPlus. Existing families are also able to apply for a full or part scholarship under the new model and to give up their existing subsidy if they are awarded a scholarship.